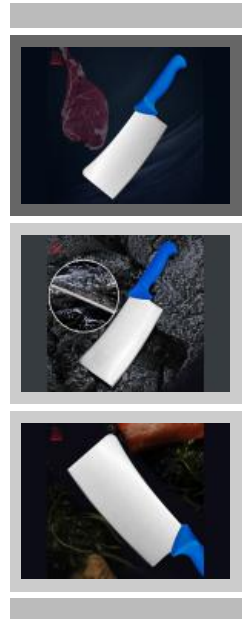




## 7" Cleaver knife

Single Stainless Steel Knife

Item No.: KN632A07Y



Description

[Quotation Information](#)

EXCELLENT QUALITY

# 7" Cleaver Knife

Very easy to chop the bone  
Very durable and wear-resisting





INFORMATION

HIGH QUALITY STAINLESS STEEL

Item	Material
7" Cleaver Knife	5Cr15Mov+PP
Blade THK	Weight
4.0mm	408g
Surface Processing	Blade W
Rubber Wheel	8.3cm

STAINLESS STEEL  
CLEAVER KNIFE



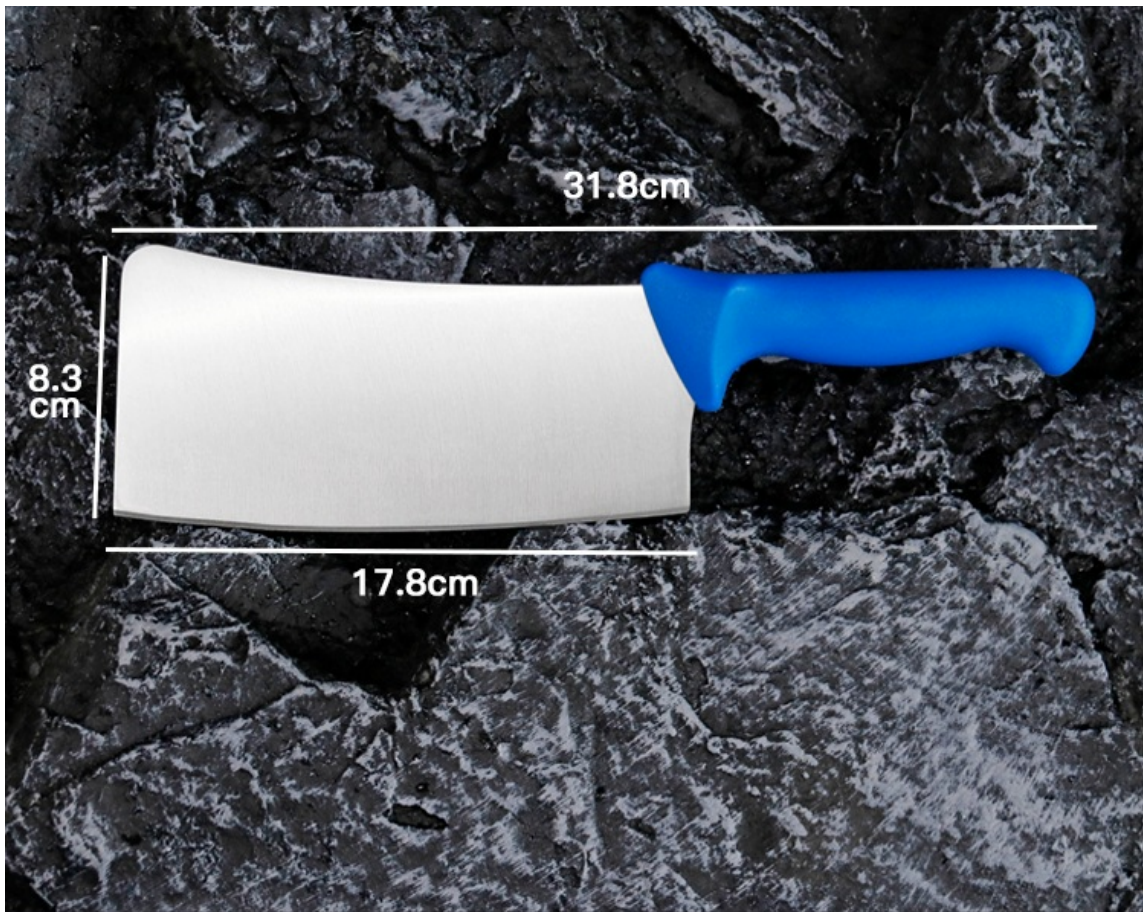


SIZE

NOTE: SIZE IS SUBJECT TO ACTUAL SAMPLE.

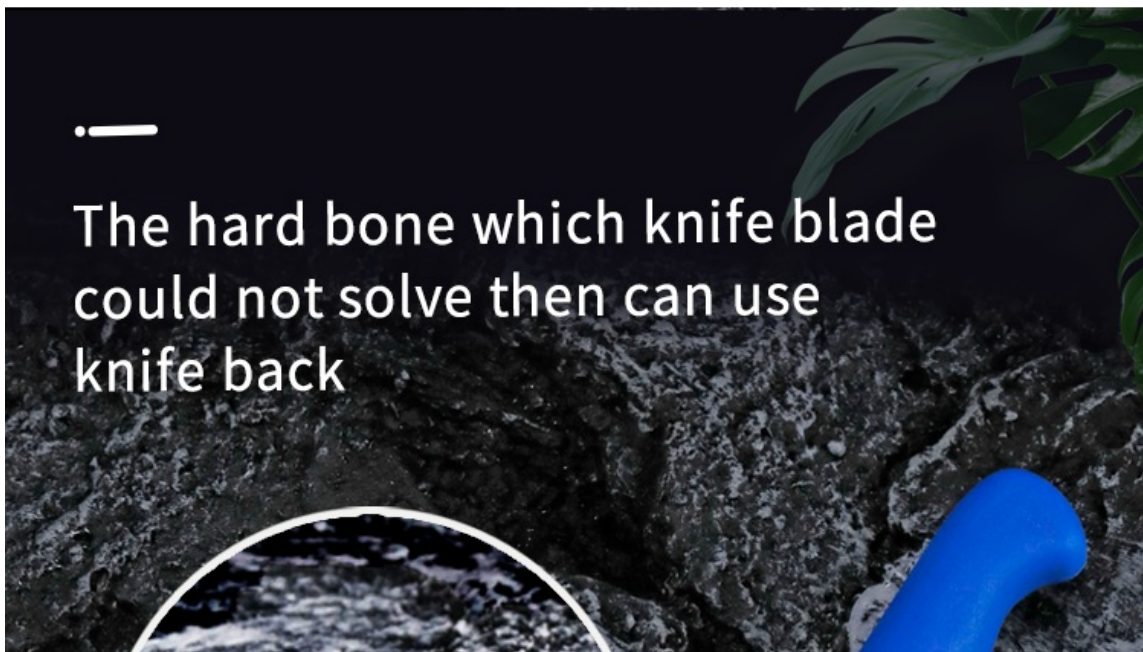






## FEATURE

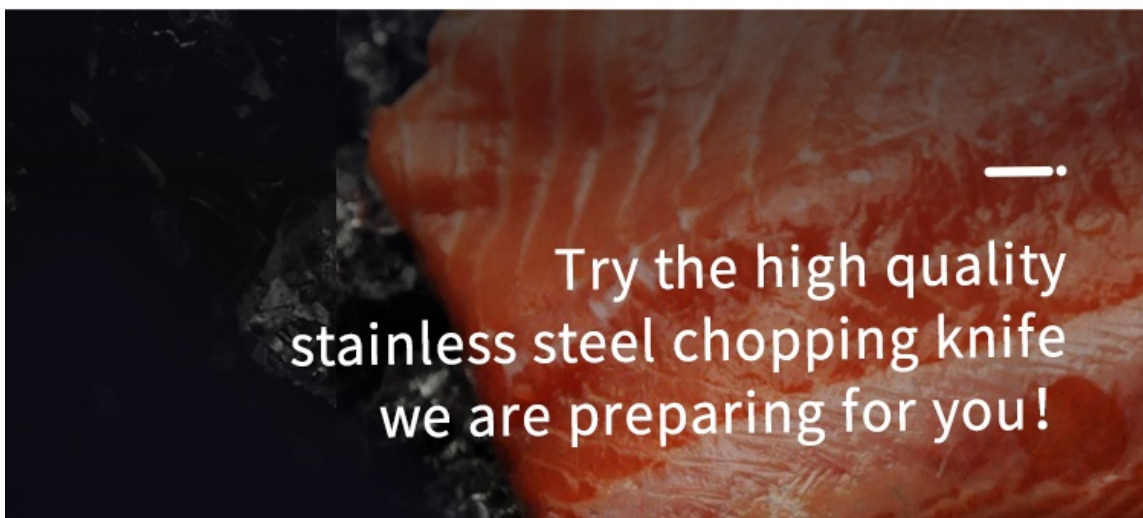
### SPECIAL DESIGNED KNIFE BACK







THE BONE IS TOO HARD,  
THE KNIFE BLADE  
HAS GAP AFTER USING?



Try the high quality  
stainless steel chopping knife  
we are preparing for you!



## DETAILS

Excellent quality, perfect embodiment, we are the best

**HIGH STRENGTH GOOD HARDNESS**





# 01

## BLADE IS MADE OF HIGH QUALITY STAINLESS STEEL

Using modern heat treatment technology on the processing,  
to guarantee the hardness of blade, back thin and edge thin,  
is faster and more convenient when using

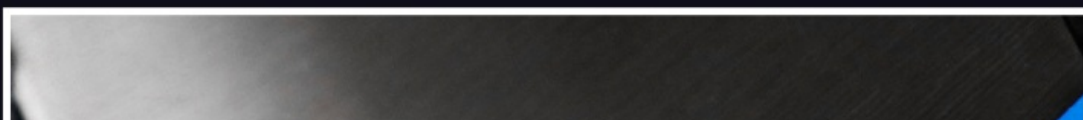


# 02



## HARD AND SHARP

Using 5Cr15Mov stainless steel will be more sharper and durable,  
top grade material and elaborate knife body design,  
had features of high hardness,abrasion resistance and high sharpness





**03**



**THICK PP HANDLE**

Anti-slip, comfortable handle feeling,  
could deal with hard bone easier!





