

Fruit cutting

Kitchenwares

Item No.: KW30036



Description

[Quotation Information](#)

Product Description

Watermelon Cutting

Suitable for all types of melon



Kitchen Tools:

Item Number	Item	Material	Specification	N.W(gram)	Packing
KW30036	Fruit cutting	#430+ABS+TPR	32x22.9x5.2cm	328g	Bulk Package
KW30036	Fruit cutting	#430+ABS+TPR	40x30.5x5.5cm	625g	Bulk Package

Product : Watermelon Cutting

Material : #430+ABS+TPR

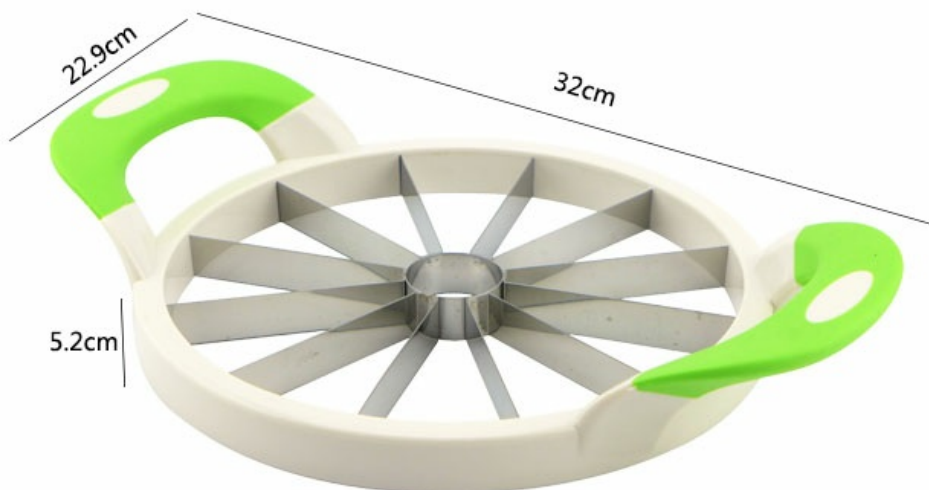
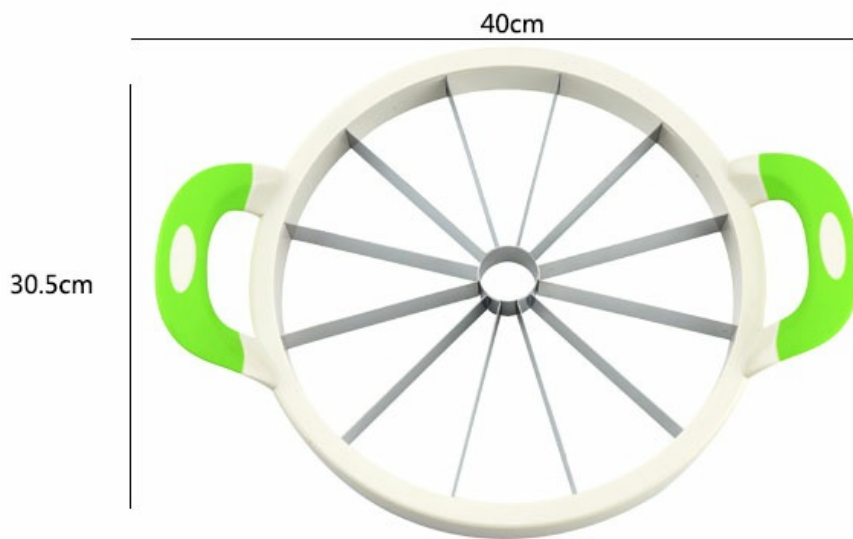
Size : 32x22.9x5.2cm

40x30.5x5.5cm

Weight : 328g, 625g



Product Size



Note:Size is subject to actual sample.

Detailed Images

USE:

1.Grasp the Watermelon cutter by the handles on each side.ensure hands and fingers are kept clear of the cutting blades.

2.Ensure your Watermelon is on a flat,stable surface.carefully push the Watermelon cutter,down and through the Watermelon.

3.Carefully remove the cut Watermelon from the Watermelon cutter.clean the Watermelon cutter immediately after use.



Perfect combination of high quality special stainless steel blade and green material ABS,
not easy to disassemble and extend service life.

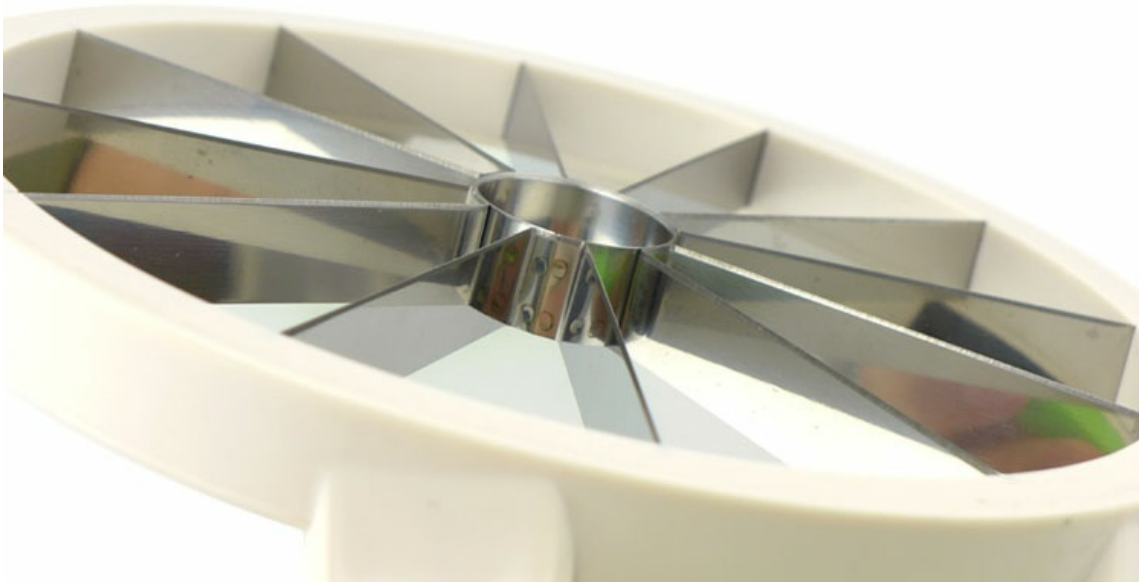


Ergonomic design TPR handle, non-slip, touch feeling is comfortable, simple and easy to use.





Made of high quality stainless steel,thin and sharp



Precautions:

Caution!this item contains a sharp cutting blade.

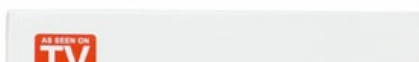
Grasp the handles only.keep hands and finger away from the blades during use.

Exercise care when cleaning.

Not suitable for use in a dishwasher.



Product packaging



Cuts 12 uniform slices
suitable for all types of melons



rustproof stainless steel blades
with centre cutout for easy slice
removal
perfect for slicing all melons and
pineapple
easy grip non-slip handles

